



TUSHIYYAH
INTEGRATED SERVICES LIMITED

Corporate Profile

TABLE OF CONTENTS



INTRODUCTION

VISION, MISSION AND CORE
VALUES

SERVICES AT A GLANCE

CORE OFFERINGS

SOFTWARE CAPABILITY

PROJECTS

CONTACT US



TUSHIYYAH
INTEGRATED SERVICES LIMITED

WHO WE ARE

Tushiyyah Integrated Services Limited is a leading and versatile company, specialized in providing expert solutions in 3D laser scanning, engineering design, procurement, construction and installation support, manpower supply, and project management.

We deliver efficient and cost-effective services across industries by leveraging modern technology and a team of skilled engineers, designers, inspectors, and project managers.

Tushiyyah ensures seamless coordination and client satisfaction by delivering projects from concept to completion with a strong emphasis on quality, safety, and timely execution.

Our track record includes successful collaborations with industry leaders such as Prime Atlantic Cegelec (PACE) and SPIE Services Nigeria Ltd, further demonstrating our commitment to reliability and performance. We also maintain strategic partnerships with Sigma Paints, Ritech, and Hempel, enabling us to enhance our service delivery and technical capacity.



VISION, MISSION AND CORE VALUES

VISION

To set the industry standard for excellence and innovation in engineering and project solutions, delivering innovative, safe, and sustainable services that exceed client expectations across Africa and beyond.

MISSION

To provide high-quality engineering, procurement, construction support, and project management services by leveraging advanced technology, skilled professionals, and strategic partnerships.

CORE VALUES

- **Safety**
- **Excellence**
- **Innovation**
- **Intergrity**
- **Sustainability**



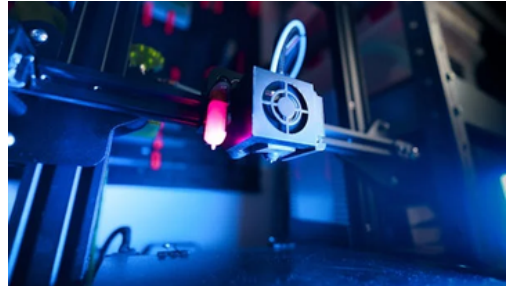
TUSHIYYAH
INTEGRATED SERVICES LIMITED

SERVICES AT A GLANCE



ENGINEERING SERVICES

CONCEPTUAL, FEED, DETAILED, LIFTING DESIGN, AS BUILT, REVERSE ENGINEERING, FOR MAINTENANCE



LASER SCANNING

FIELD SCANNING, DATA PROCESSING, 3D MODELLING, FIT-UP ASSURANCE



CONSTRUCTION

CIVIL WORKS, PREFABRICATION (MECHANICAL & STRUCTURE), E & I



PROCUREMENT

MATERIAL PROCUREMENT, LOGISTICS, POST ORDER SERVICES



PROJECT & OPERATIONS MANAGEMENT

SUPERVISION, MONITORING & CONTROL, PROJECT MANAGEMENT, BUSINESS CASE DEVELOPMENT, FEASIBILITY STUDIES



MARINE

MARINE SURVEY, NAVAL ENGINEERING, STABILITY ANALYSIS, ANCHOR DESIGN



TUSHIYAH
INTEGRATED SERVICES LIMITED

CORE OFFERINGS

ENGINEERING

- Conceptual Design
- FEED (Front-End Engineering Design)
- Detailed Engineering
- Lifting Design
- As-Built Documentation
- Reverse Engineering for Maintenance

PROJECT MANAGEMENT

- Project Scheduling
- Project Management
- Project Cost Estimating
- Business Case Development
- Feasibility and Strategic Studies
- Supervision, Monitoring & Control

PROCESS ENGINEERING

- Heat & Material Balances
- Process Calculations
- Energy Audits and Studies
- Steam and Power Balances
- Pump & Slurry System Calculations

DOCUMENT CONTROL

- Document Management
- Manufacturer Record Books



TUSHIYYAH
INTEGRATED SERVICES LIMITED

MECHANICAL / PIPING ENGINEERING

- Heating, Ventilation & Air Conditioning (HVAC)
- Pipe Stress Analysis
- Finite Element Analysis (FEA)
- Process Plant / Equipment Layouts
- Power and Process System Design
- Pipe and Pumping System Analysis
- Detailed Mechanical and Piping Design
- Computational Fluid Dynamics (CFD)
- Thermal Power Generation System Design
- 3D Modeling / Rendering / Virtual Walk-throughs
- Pressure Piping Design and Registration
- Tank Farm Design
- GRE/GRP Services



ONSHORE & OFFSHORE LOGISTICS SUPPORT

- Land & Marine Logistics (Trucks, Barges, Vessels)
- Equipment Leasing (Dozers, Excavators, Dumpers, Cranes, Compactors)
- Inspection and Test Plans
- Inspection Program Coordination



TUSHIYYAH
INTEGRATED SERVICES LIMITED

DREDGING

- Sand Filling
- Reclamation Works

ELECTRICAL ENGINEERING

- Layouts
- Module Design
- Area Classification
- Power System Studies
- Electrical Buildings Design
- Low and Medium Voltage Power Distribution

LIFTING ENGINEERING

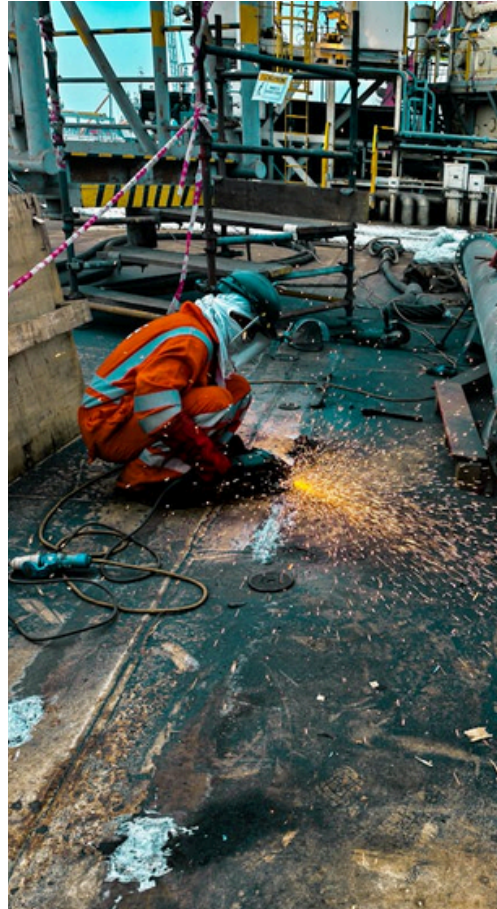
- Load Calculations
- Lifting Designs

QUALITY ASSURANCE/QUALITY CONTROL

- Quality Audits
- Quality Planning
- Inspection and Test Plans
- Inspection Program Coordination

SURVEY

- Geo-Technical Survey
- Topographic Survey
- Hydrographic Survey
- Seismic Survey



TUSHIYYAH
INTEGRATED SERVICES LIMITED

INSTRUMENTATION AND CONTROLS

- HMI Design
- Detail Design
- Loop Diagrams
- Instrument Specifications
- Control System Architecture Development

CIVIL/STRUCTURAL ENGINEERING

- Design Reviews
- Dynamic Analysis
- Constructability Reviews
- Structural Steel Design and Analysis
- Equipment and Building Foundations
- Existing Structure Analysis and Review
- Structural Steel Detailing and Shop Drawings
- Complete Concrete Above & Below-Ground Design



CIVIL WORKS

- Roads, Bridges & Highways Construction
- Dams & Drainage
- Buildings (Industrial & Domestic)
- Piling & Foundation Works



PROCUREMENT

- Expediting
- Tender Evaluation
- Project Tendering Documentation
- Construction Contract Preparation
- Equipment Specification & Procurement

MARINE ENGINEERING

- Naval Architecture
- Stability Analysis
- Wind Load Analysis
- Anchor Design
- Launching Design
- Marine Survey

CONSTRUCTION MANAGEMENT

- Construction Management
- Construction Field Support
- Commissioning and Start-up Support

TECHNICAL SAFETY

- HAZOP (Hazard and Operability Study)
- HAZID (Hazard Identification)
- Hazardous Area Classification
- Fire Protection System Design
- Risk Assessment Matrix



TUSHIYYAH
INTEGRATED SERVICES LIMITED

PROJECTS

Project Title: Supply of scaffolding consumables

Year: 2024 (Completed)

Client: PACE

Brief Description: Successfully supplied scaffolding consumables like Portable Bow Shape Wood Saw with Blade, Metal Hacksaw with Blade - FACOM 601, 14" Universal Hand Wood saw - HAUTMEC HT0024, Horizontal Temporary Lifeline System - FALLTECH 4 person horizontal lifeline, Scaffolding Bolt End caps e.t.c

Project Title: Supply of Studbolts & Nuts Gasket Spades

Year: 2025 (On-going)

Client: PACE

Brief Description: Received PO to supply Studbolts and Nuts Gasket Spades



TUSHIYYAH
INTEGRATED SERVICES LIMITED

SOFTWARE CABABILITY

Process

ASPENHYSYS, FLARESIM, OLGA, PIPESIM

Mechanical

PV ELITE, INVENTOR, ASHRAE, CARRIERHAP, TRANE

Piping

AUTOCAD PLANT 3D, PIPE DATA PRO, CAESAR II

Civil/Structural

STAADPRO V8i, SACS 5.6 V8i, TEKLA, LPILE

Electrical

ETAP, LUMIZ, DIALUX, SKM POWERTOOLS, CHALMLITE

Instrumentation

INTOOLS, AUTOCAD

Loss Prevention (Technical Safety)

SHEEL FRED, DNV PHAST, PIPENET, PHA PRO, SHELL SHEPHRED, CaDaA, SOUNDPLAN

Document Management

MICROSOFT SHAREPOINT/ONEDRIVE, DOCUMENTUM, ASSAI, LIVELINK, CAPITOL PROJECT, M-FILES

Account

1STKLASS

Instrumentation

INTOOLS

Modeling, Project Management, CAD Solutions

AUTOCAD ENGINEERING, CONSTRUCTION & ARCHITECTURE SUITE, NAVISWORKS, FARO SCENE, AVEA E3D, PDMS, PRIMAVERA P6, POWER BI, MS PROJECT

ICT

SAP2000 SAFE

Editing, Writing Tools

MICROSOFT OFFICE, ADOBE PRO



TUSHIYYAH
INTEGRATED SERVICES LIMITED

CONTACT US



TUSHIYYAH
INTEGRATED SERVICES LIMITED

Plot 27, Opposite Seagle Towers, Odudu
Eleyiwo Street, Oniru, Victoria Island, Lagos

tushiyyahintegratedservices@outlook.com

Mobile Number: +234-(0)-8035392164